

Families are healthy – physically,
mentally, emotionally
and spiritually



HEALTH

Addressing the physical and mental health care needs of youth and families is paramount to ensuring their overall development and well-being.¹ Poor childhood health affects school attendance and performance and increases the likelihood of chronic health problems as adults.² Children and youth exposed to maltreatment and trauma are more likely to suffer life-long emotional and behavioral health concerns.³



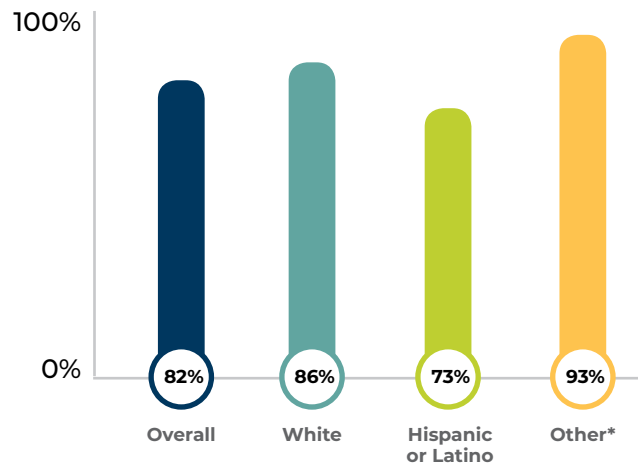
Physical Health



RESPONDENTS SATISFIED WITH PHYSICAL HEALTH⁴



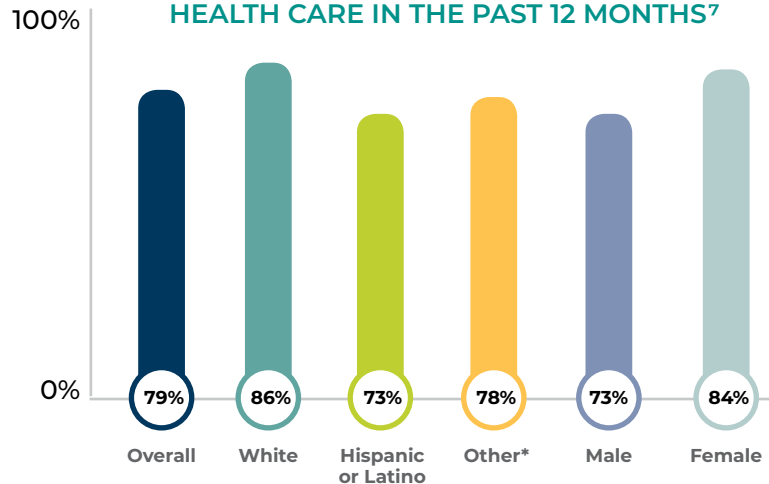
RESPONDENTS' CHILDREN HAVE SEEN A HEALTH CARE PROVIDER IN THE LAST 12 MONTHS⁵



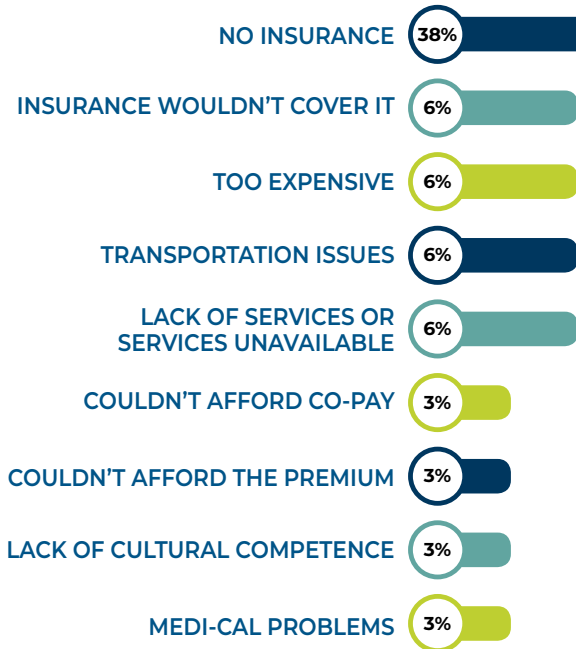
Poverty, food insecurity, and poor nutrition have serious consequences for the health and well-being of children.⁶



RESPONDENTS WHO RECEIVED NECESSARY HEALTH CARE IN THE PAST 12 MONTHS⁷

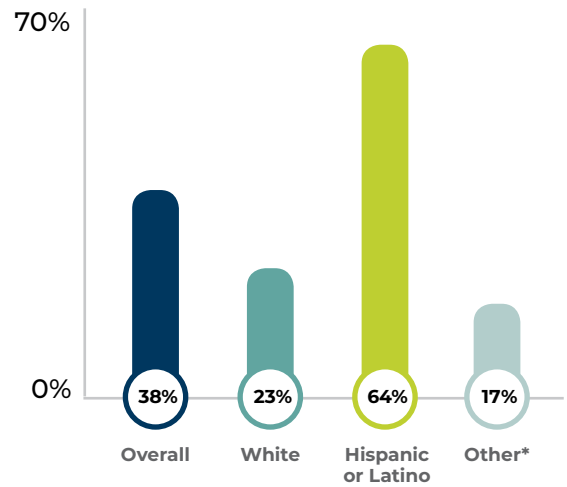


REASONS RESPONDENTS WERE UNABLE TO RECEIVE THE HEALTH CARE THEY NEEDED⁸



Note: Percentages may not add up to 100 due to rounding.

RACE/ETHNICITY OF RESPONDENTS WITH NO INSURANCE⁹

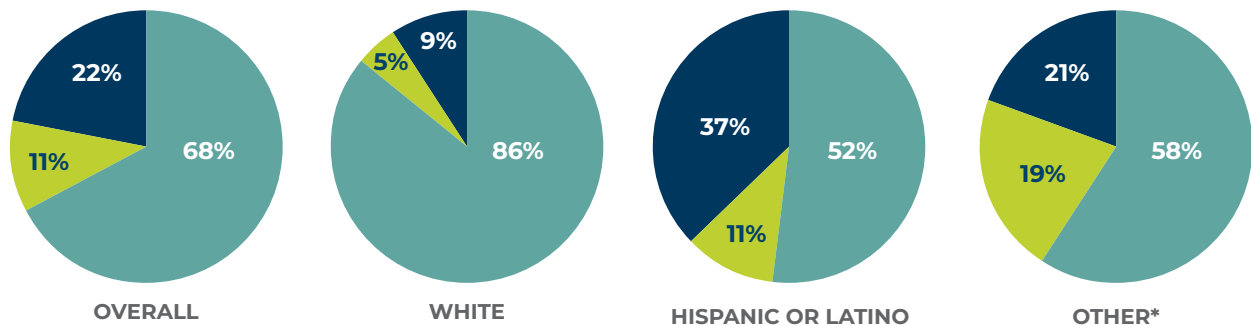


Note: Percentages may not add up to 100 due to rounding.

38% of survey respondents are not covered by health insurance.

USUAL SOURCE OF CARE¹⁰

● PRIVATE PRACTICE
 ● EMERGENCY ROOM AND COMMUNITY CLINICS
 ● URGENT CARE CLINICS, ALTERNATIVE CARE PRACTICES, AND OUT OF COUNTY



Note: Percentages may not add up to 100 due to rounding.

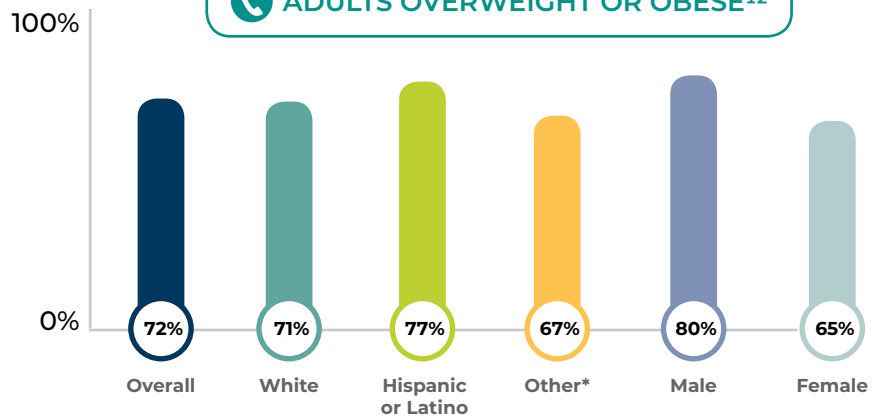


EVER DIAGNOSED WITH ASTHMA¹¹

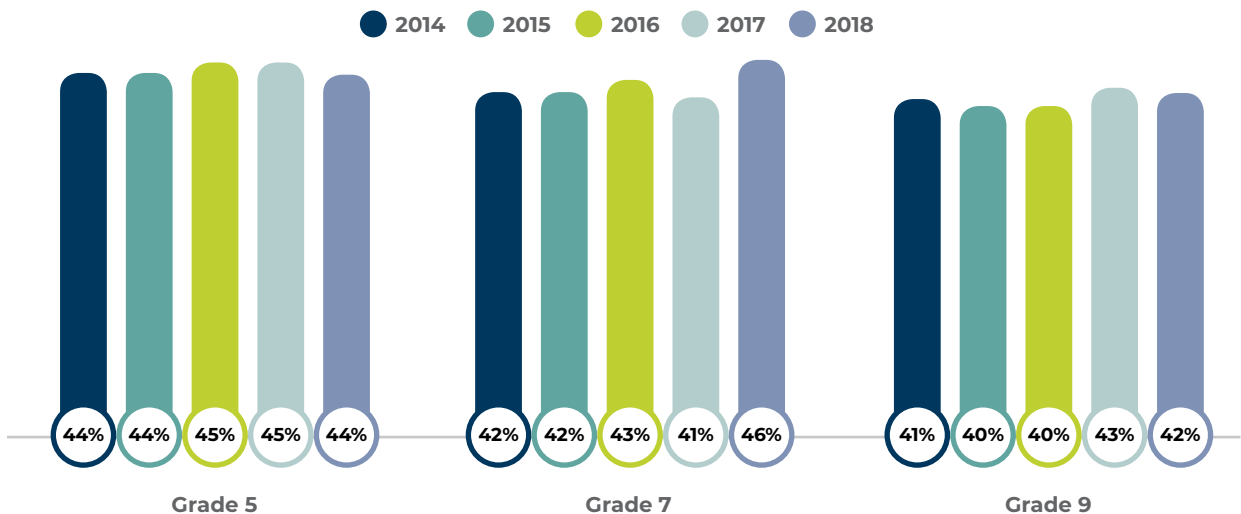
	2014	2015	2016	2017	2018
Latino	12.5%*	12.7%*	11.9%*	13.5%*	17.1%*
White	13.8%*	20.7%	21.5%*	17.1%*	20.5%*
Stanislaus County	12.0%*	19.3%	18.4%	16.5%	18.0%*
California	14.0%	15.2%	14.8%	15.4%	15.7%

* Data statistically unstable.

ADULTS OVERWEIGHT OR OBESE¹²



YOUTH OVERWEIGHT OR OBESE¹³



89% of respondents expressed satisfaction with their physical health, despite **72%** of respondents BMI indicating that they are overweight or obese.



Death Rates

DEATH RATES BY CAUSE

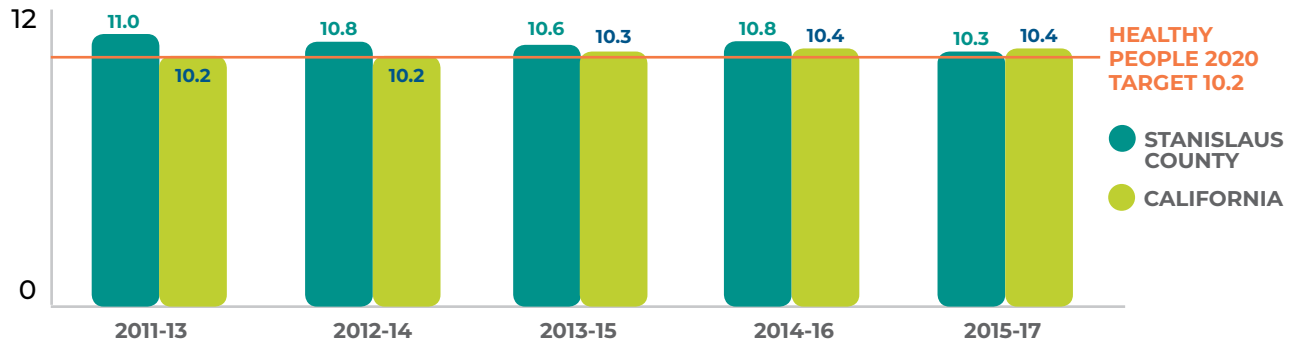
AGE-ADJUSTED[^] DEATH RATE PER 100,000 POPULATION
(THREE-YEAR AVERAGES) BY CAUSE OF DEATH¹⁴

	2011-13	2012-14	2013-15	2014-16	2015-17
All Cancers					
	Healthy People 2020 Target: 161.4				
Stanislaus County	166.7	172.3	174.1	171.5	166.7
California	151.0	146.5	143.8	140.2	137.4
Lung Cancer					
	Healthy People 2020 Target: 45.5				
Stanislaus County	41.1	29.5	39.5	36.5	37.1
California	33.6	31.7	30.6	28.9	27.5
Breast Cancer (Female)					
	Healthy People 2020 Target: 20.7				
Stanislaus County	20.3	22.1	21.2	19.9	18.8
California	20.7	20.3	19.8	19.1	18.9
Coronary Heart Disease					
	Healthy People 2020 Target: 103.4				
Stanislaus County	148.0	146.3	141.7	135.6	131.1
California	103.8	96.6	93.2	89.1	87.4

[^] Age-adjusted rate calculations are a summary measure allowing for unbiased comparisons between groups with different age distributions in the population over time, or among diverse populations. Unless noted as age-adjusted, rates shown are age-specific rates which are also used for unbiased evaluation however among groups of the same age or age range. Age-adjusted rates and age-specific rates are not comparable.

DEATH BY SUICIDE¹⁵

AGE-ADJUSTED[^] DEATH RATE PER 100,000 PEOPLE

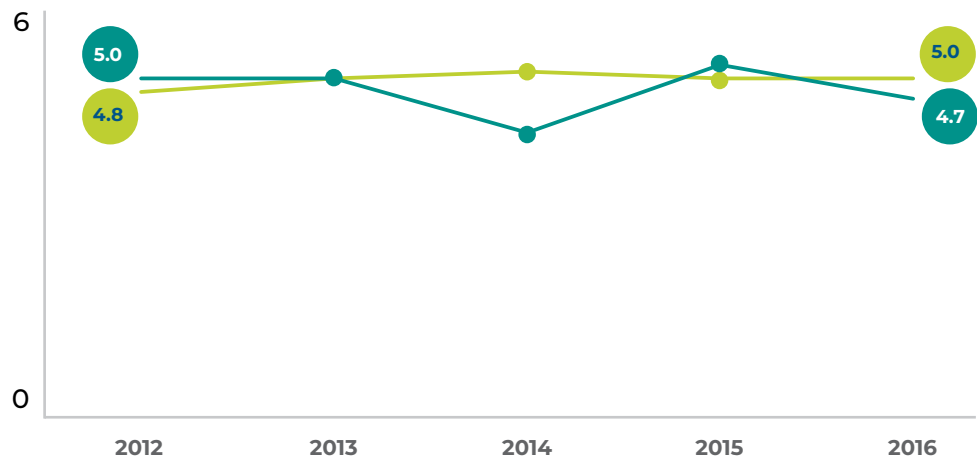


[^] Age-adjusted rate calculations are a summary measure allowing for unbiased comparisons between groups with different age distributions in the population over time, or among diverse populations. Unless noted as age-adjusted, rates shown are age-specific rates which are also used for unbiased evaluation however among groups of the same age or age range. Age-adjusted rates and age-specific rates are not comparable.

Mental/Behavioral Health & Substance Use

ADOLESCENT HOSPITALIZATION RATE PER 1,000 FOR MENTAL HEALTH ISSUES, AMONG AGES 5-19 YEARS¹⁶

● STANISLAUS COUNTY
● CALIFORNIA



ADOLESCENT HOSPITALIZATION RATE PER 1,000 FOR MENTAL HEALTH ISSUES

Age Group	2012	2013	2014	2015	2016
5-14 years	2.1	2.4	2.2	2.7	2.6
15-19 years	10.3	10.2	8.0	9.9	8.8

Mental illness is the #1 reason California kids are hospitalized.¹⁷

Suicide is the second leading cause of death for youth and young adults ages 10 to 24.¹⁸

PERCENT OF YOUTH SERIOUSLY CONSIDERING SUICIDE¹⁹

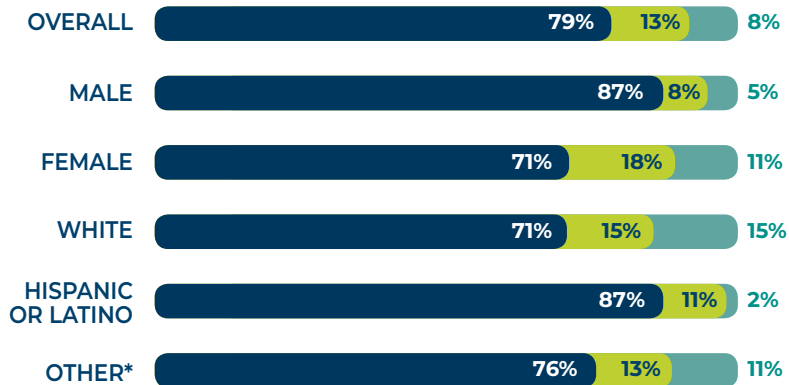
2014-2015

2015-2017



NUMBER OF DAYS MENTAL HEALTH WAS NOT GOOD DURING THE PAST 30 DAYS²⁰

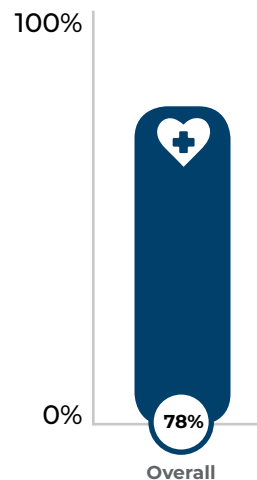
- 0 DAYS
- 1 TO 5 DAYS
- 6 OR MORE DAYS



Note: Percentages may not add up to 100 due to rounding.

Children need access to quality, affordable mental health care and supports that monitor and treat mental illness, help them build positive relationships, assist those who have experienced trauma, and give youth the ability to face typical stressors with resilience.²¹

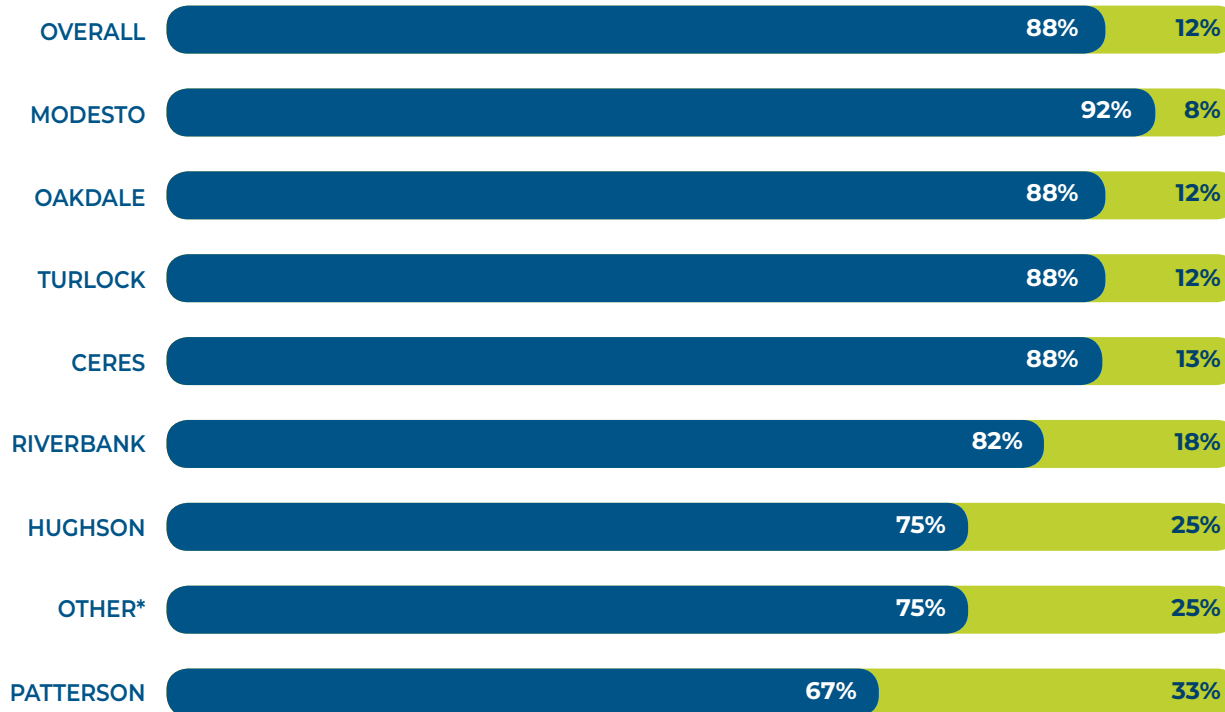
RESPONDENTS WHO NEEDED MENTAL HEALTH TREATMENT, COUNSELING OR OTHER HELP, IN THE LAST 12 MONTHS AND RECEIVED IT²²



Access to Healthy Food

 DISTANCE TRAVELED IN ORDER TO GET HEALTHY FOOD, LIKE FRESH FRUITS AND VEGETABLES²³

 LESS THAN 5 MILES  6 MILES OR MORE



Note: Percentages may not add up to 100 due to rounding.

More than **20%** of California kids are food insecure.²⁴

